

# Blue Notes

Issue 1, 2019



[horizonNJhealth.com](http://horizonNJhealth.com)

Horizon   
Horizon NJ Health

Horizon NJ Health wants to make sure you have the information you need to take care of your health. Our specially-trained Member Services Representatives are here to help you understand your benefits. If you have any questions, please call Member Services at **1-800-682-9090 (TTY 711)**, 24 hours a day, seven days a week.

## In this issue

Is it time for your annual wellness exam? .....	2
6 tips to get the most from your health plan.....	3
Caring for a loved one: you are not alone .....	5
Horizon NJ TotalCare (HMO SNP) – All your benefits in one plan.....	6
Our commitment to quality.....	6
Save money with NJSave .....	6
Caring for a loved one with a cognitive impairment .....	7
A reminder about lab services .....	8
Managed Long Term Services & Supports .....	8
Member rights and responsibilities .....	8
Get the care you need during and after your pregnancy.....	9
Need a ride? .....	10
Are you at risk for aspiration pneumonia?.....	11
Preventing bedsores.....	12
Access to Horizon NJ Health online member support services .....	12
Colon cancer is treatable. Detect it early with a simple screening.....	13
First aid for seizures.....	14
We're here to support children's health care needs with immunizations .....	14
Formulary changes.....	15
Make fall prevention a priority .....	16
Our Notice of Nondiscrimination .....	17
Getting help in your language .....	18



## Is it time for your annual wellness exam?

If you have not seen your Primary Care Provider (PCP) for a checkup within the last 12 months, it's time for your annual wellness exam. Seeing your doctor for an annual exam is important, even if you are feeling healthy and well. It gives you the chance to talk to your doctor about how you've been feeling and any health concerns you may have. Annual exams let your PCP find and treat any possible health issues early, before they become serious.

At your wellness visit, your doctor will:

- Check your weight and blood pressure
- Measure your body mass index (BMI)
- Examine you for physical signs of health issues
- Let you know if you need any screenings or immunizations, based on your age and other risk factors



There are **NO copayments** for annual exams. They are part of your covered benefits.

Your PCP's name and phone number are on your Horizon NJ Health member ID card. If you need to change your PCP, you can do this through Member Online Services at **horizonNJhealth.com** or by calling **1-800-682-9090 (TTY 711)**, 24 hours a day, seven days a week.



### More information about your benefits.

You can get detailed information about your benefits at **horizonNJhealth.com**, under *Member Support*, select *Handbooks* and click *Member Handbook (NJ FamilyCare)*.

# 6 tips to get the most from your health plan



We're always just a phone call away.

Questions about your benefits?

Call us at **1-800-682-9090** (TTY 711),  
24 hours a day, seven days a week.

## 1 Build a relationship with your PCP

Quality care starts with your PCP — someone who you trust with your health and well-being. We also work with your PCP to:

- Encourage you to get annual checkups and preventive screenings – at **no cost** to you
- Coordinate your care with other doctors or specialists

## 2 Get an appointment with your doctor quickly and easily

Your time is valuable. If you are on time for your appointment, you should not have to wait too long to see your doctor.

### Things to remember:

- When making your appointment, ask to be the first one seen that day.
- Call us if you need help getting an appointment with a specialist.
- Ask your doctor's office to let you know if they are running late.

## 3 Enjoy convenient access to all of your plan information

Register or sign in at [horizonNJhealth.com](https://horizonNJhealth.com) to:

- View your member ID card or request a new ID card
- Change your PCP
- Get a list of covered prescription drugs
- Get important plan information
- Find a doctor, hospital or specialist near you

Be sure to get a referral from your PCP to see a specialist. You do not need a referral to see a dentist or Ob/Gyn, or for routine eye care or mammograms.

## 4 Let us help you coordinate all of your health care needs

Our Care Managers can help you understand your benefits and help you get the care you need. They can help you:

- Coordinate services with your doctors, pharmacies and home care agencies
- Schedule doctor appointments, transportation and translation services when you need them
- Provide education to help you better manage your chronic health conditions
- Answer questions about your health and/or benefits
- Provide resources for housing, behavioral health services, food, finance and education

Our Care Management team is available Monday through Friday, from 8 a.m. to 5 p.m., Eastern Time (ET). Please call **1-800-682-9094 x89634** (TTY 711). Care Management is free, voluntary and does not affect your benefits.

## 5 Watch for reminders when you are due for appointments or preventive care

Getting preventive health screenings or vaccines, like annual wellness visits or flu shots, are an important part of your health. Many of these are covered under your benefits so there is no cost to you. If you have questions or concerns about a vaccine or screening, call Horizon *Healthy Journey* at **1-844-754-2451** (TTY 711), Monday through Friday, from 8:30 a.m. to 5 p.m., ET.

## 6 Renew your NJ FamilyCare eligibility every year

Don't risk losing your coverage.

- Call your County Welfare Agency (CWA) or NJ FamilyCare at **1-800-701-0710** (TTY **1-800-701-0720**) to find out your renewal date.
- If you receive a form, blank application or written request from NJ FamilyCare, respond right away.



## Caring for a loved one: you are not alone

Caregivers are responsible for tasks that can be draining, especially activities of daily living (ADLs). ADLs are often physically hard to do, including helping your loved one bathe, toilet, get dressed and eat. Being a caregiver can be harder if your loved one has a cognitive (decline in memory or thinking skills) disease such as dementia. Your loved one may be moody, wander away from home or be in a dangerous situation, like leaving the stove on or forgetting to turn off the faucet.

Every situation has different hardships. Some caregivers find that they cannot leave their loved one alone or have so many responsibilities that they must cut back working hours or stop working altogether. If there is no other household income, this can cause financial problems.

### Avoiding burnout

To avoid feeling exhausted, it is important that you take care of yourself first. Exercise, eat healthy meals that are good for you, and make time to do things you enjoy, like meeting friends or reading.

Groups like your local Area Agency on Aging can also help caregivers find support, including ways to handle finances, finding an in-home aide or connections with other caregivers. Find your local chapter by visiting [n4a.org](http://n4a.org). Your Care Manager can assist with caregiver supports - be sure to discuss it with them. You can also find resources at [horizonNJhealth.com](http://horizonNJhealth.com) under the *For Caregivers* tab.

## Horizon NJ TotalCare (HMO SNP): All your benefits in one plan

If you are eligible for Medicaid and Medicare, you can get all your health care benefits under one convenient plan. **With Horizon NJ TotalCare (HMO SNP), you can receive benefits and services at no cost to you.** Horizon NJ TotalCare (HMO SNP) includes:

- **\$0 premiums**
- **\$0 copayments**
- **\$0 deductibles**
- **No referrals**
- **\$245 per quarter** to purchase health items from the Health Products Benefit Catalog
- **NEW: An additional \$250 per quarter** on a prepaid Over-the-Counter (OTC) Benefit Card to purchase eligible health care products from retail stores like Walmart or CVS



To learn more, call **1-888-328-5736** (TTY **711**), 24 hours a day, seven days a week, or visit [HorizonBlue.com/TotalCare](http://HorizonBlue.com/TotalCare).

## Our commitment to quality

Horizon NJ Health's Quality Improvement (QI) program works with members and providers to improve the quality of care and services you receive. Our QI program ensures these services continue to be appropriate, necessary and properly administered. We monitor areas that affect the care our members get, like access to care, screenings and member satisfaction. For more information about Horizon NJ Health's QI program and its progress toward goals, visit [horizonNJhealth.com/quality](http://horizonNJhealth.com/quality), or call Member Services at **1-800-682-9090** (TTY **711**) and ask for the Quality Department.



## Save money with NJSave

NJSave is an electronic application system for New Jersey seniors and disabled residents to access savings and assistance programs all in one place.

### Save Money on:

- prescription costs
- living expenses

To find out if you qualify for any programs that provide financial assistance for health care costs and living expenses, visit [njdoas-ua.force.com/njsave/quickstart](http://njdoas-ua.force.com/njsave/quickstart).



## Caring for a loved one with a cognitive impairment

Caring for a loved one with a cognitive impairment (decline in memory or thinking skills) can be challenging. Even having a simple conversation can be difficult. Individuals with cognitive impairment can experience:

- Aggressive or impulsive behaviors
- Lack of motivation
- Memory problems
- Poor judgment
- Fixation on/repetition of an idea or activity
- Incontinence (trouble holding urine or bowels)
- Paranoia (suspicion or mistrust of people)
- Wandering

To help your loved one, keep language simple, and ask one question at a time. For example, instead of asking "Would you like to come in and sit down and have a snack?" use simple statements such as "Sit down here." and "Here's a snack for you."

Wandering and poor judgment could lead to dangerous situations and the need for 24-hour supervision. Use the resources below and know who to contact in your community in case of an emergency.

### Resources

Center for Parent Information and Resources: [parentcenterhub.org/repository/intellectual](https://parentcenterhub.org/repository/intellectual)

Family Caregiver Alliance: [caregiver.org/caring-adults-cognitive-and-memory-impairment](https://caregiver.org/caring-adults-cognitive-and-memory-impairment)

Alzheimer's Association: [alz.org](https://alz.org)



## A reminder about lab services

We encourage you to use Laboratory Corporation of America® Holdings (LabCorp) when getting laboratory services. LabCorp is your laboratory services provider.

You can visit [horizonNJhealth.com/findadoctor](https://horizonNJhealth.com/findadoctor) to find a LabCorp location near you. Select *Other Healthcare Services* in the dropdown menu, then type *Laboratory* in the search field.

LabCorp also offers online appointment scheduling for all New Jersey Patient Service Centers. Visit [labcorp.com/PSC](https://labcorp.com/PSC) to find a location. Walk-in patients are welcome.

You can use *LabCorp Patient*, an online service, to download and print your test results on your own. You can register at [patient.labcorp.com](https://patient.labcorp.com). LabCorp will give your test results to your doctor before posting them to your online account.

## Managed Long Term Services & Supports

Horizon NJ Health's Managed Long Term Services & Supports (MLTSS) Program helps members live in the community with long-term support for as long as possible. The MLTSS Program includes services beyond standard NJ FamilyCare benefits that are designed to help members grow older safely in their own homes and communities. These services are tailored to each individual's needs and can include:

- Rehabilitation therapies (occupational, physical, speech, cognitive)
- Community residential services
- Personal care services
- Home and vehicle modification
- Nursing Home care
- And more

Each member is assigned a Care Manager to help coordinate his or her care, and a Plan of Care is developed with input from the member and the member's PCP. In order to be eligible for the MLTSS Program, there are financial, clinical and/or disability requirements. For more information, or to see if you could be eligible, please call Horizon NJ Health MLTSS Member Services at **1-844-444-4410** (TTY **711**), 24 hours a day, seven days a week or call your local County Welfare Agency (CWA).



## Member rights and responsibilities

As a Horizon NJ Health member, you have rights, responsibilities and choices in the care you get. Your member rights and responsibilities can be found in your Horizon NJ Health Managed Long Term Services & Supports (MLTSS) Member Handbook, or at [horizonNJhealth.com/memberrights](https://horizonNJhealth.com/memberrights).

# Get the care you need during and after your pregnancy



If you are pregnant – congratulations! This is an exciting time in your life, and getting the right prenatal and postpartum care is very important for both you and your baby’s health. Our Mom’s GEMS (Getting Early Maternity Services) Program is designed to help you get good prenatal care, regular checkups, nutrition advice and postpartum information after your baby is born. You can call Member Services to enroll at **1-800-682-9090 (TTY 711)**.

**!** You will need to call NJ FamilyCare at **1-800-701-0710 (TTY 1-800-701-0720)** to let them know you are pregnant.

## Prenatal Care

During your pregnancy, you will visit your Ob/Gyn as scheduled below. If your pregnancy is high-risk, you may see your doctor more often.

Weeks 4-28	1 visit each month (every 4 weeks)
Weeks 28-36	1 visit every 2 weeks
Weeks 36-delivery	1 visit each week

At these visits, your doctor will:

- Measure your weight
- Check your blood pressure
- Measure your abdomen
- Check the baby’s heart rate

At certain visits, your doctor will do ultrasounds and blood tests. Be sure to bring a list of your questions and concerns to your appointments.

## Postpartum Care

You should call your doctor as soon as you deliver your baby to schedule a postpartum visit. During this visit, your doctor will see how you are doing both physically and emotionally.

Visit type	When	Who needs it
Stitch check	1 week after delivery	Women who had a C-section
Postpartum visit	3-6 weeks after delivery	All women

**!** Even if you had a stitch check, you still need to see your doctor for a postpartum visit.

## Download the free BabyGEMS pregnancy app

The BabyGEMS app will track your baby’s health through every stage of your pregnancy. You can continue to use the BabyGEMS app after your baby is born to get helpful information about your baby’s development.

- **Connect** with Member Services, find a doctor or lab in your network, request a ride to an appointment and access the Mom’s GEMS Prenatal Program.
- **View** health milestones for both mom and baby.
- **Find** answers to common pregnancy questions.
- **Know** what is happening each stage of your pregnancy with videos, reminders and tips.
- **Tools** for your partner or spouse to support you during and after pregnancy.
- **Track** your weight, calculate your due date, access the kick counter, create a birth plan and more!
- **Record** questions you want to ask at your next appointment.



To download the BabyGEMS app, search “BabyGEMS” in the App Store or Google Play.



## Need a ride?

LogistiCare coordinates non-emergency transportation to covered medical appointments, at no cost to you. Here’s what you can do to easily and conveniently schedule a ride:

- Call the LogistiCare Reservation Line 48 hours in advance of your appointment toll free at **1-866-527-9933 (TTY 1-866-288-3133)** from 8 a.m. to 4:30 p.m., ET.
- Make your reservation online at **member.logisticare.com**.
- Download the free *LogistiCare Trip Manager* from the app store on any smartphone and schedule your ride via the app.



## Are you at risk for aspiration pneumonia?

Older adults, people with dementia, stroke survivors and people with conditions like Parkinson's disease, multiple sclerosis and cerebral palsy often have trouble swallowing. This may put them at a higher risk of getting aspiration pneumonia. Aspiration pneumonia happens when food, saliva, liquids or vomit are breathed into the lungs instead of being swallowed into the stomach.

### Signs/symptoms of aspiration pneumonia may include:

- Confusion
- Raised respiratory (breathing) rate
- Fever, chills or chest pain
- Shortness of breath
- Fatigue (tired)
- Hoarse voice after swallowing
- Wet coughing after eating

### To prevent aspiration pneumonia:

- See a speech pathologist or swallow therapist
- Practice exercises to strengthen throat muscles
- Use proper oral hygiene
- Eat slowly and take small bites
- Sit upright while eating
- Avoid medicines that cause drowsiness

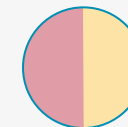


If you think you are at risk for aspiration pneumonia, talk to your doctor, as you may have a higher risk of being admitted to the hospital.

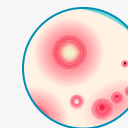
## Preventing bedsores

Bedsore are open wounds found on the skin. They are common among older adults and people with disabilities. Bedsore are caused by long periods of pressure on the skin against a hard surface, such as a bed, chair or wheelchair. They are often found on bony areas of the body such as the hips, back, heels, ankles and buttocks.

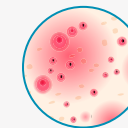
### Symptoms of bedsores include:



Changes in skin color



Open sores



Swelling of the skin



Skin feeling cooler or warmer to the touch than other areas

### To prevent bedsores, you should:

- Check your whole body every day for signs of sores
- Pay attention to bony areas of the body
- Keep your skin clean and dry
- Use mild soaps and moisturizers
- Change wet clothing/diapers often
- Change your body position at least every two hours
- Drink plenty of fluids
- Use pillows and pads to reduce pressure on bony areas of the body

You should see your doctor right away if you notice any changes in your skin.

## Access to Horizon NJ Health online member support services

If you haven't already, make sure you register to use Horizon NJ Health's secure online member support services. Registration is easy and only takes a few minutes! Once you sign up, you will be able to:

- Request a new member ID card
- Change your PCP
- Find a provider near you
- Enroll in one of our Disease Management programs to help manage your condition
- Enroll in our Mom's GEMS prenatal program if you are pregnant
- Find tools for healthy living

If you have questions about our online member support services, please call **1-800-682-9090 (TTY 711)**, 24 hours a day, seven days a week.

**50+**

90% of cases occur in people **age 50 or older.**



**1 in 3**

**One in three** people develop colorectal cancer if they have a family history.



**90%**

If found and treated early, the five-year **survival rate is 90%.**



## Colon cancer is treatable. Detect it early with a screening.

Colorectal cancer, also called colon cancer, occurs in the colon or rectum. If you've had colorectal polyps or inflammatory bowel disease, your risk of getting colon cancer is higher. Both men and women, usually age 50 or older, can get colon cancer. When colon cancer is found early, the chances of successful treatment are greater. Talk to your PCP to see which of the following tests are best for you. **Screenings save lives!**

Screening	Description	How Often?
<b>Fecal Occult Blood Test</b>	Also referred to as FOBT or FIT test – a lab test that looks for blood in a stool sample.	Once a year
<b>Flexible Sigmoidoscopy</b>	A procedure that uses a tiny camera on a thin tube to view the rectum and lower third of the colon to check for signs of cancer.	Every <b>5</b> years
<b>Colonoscopy</b>	Similar to a sigmoidoscopy, but uses a longer tube to view the entire colon.	Every <b>10</b> years
<b>CT Colonoscopy</b>	A CT scanner is used to take images of the colon.	Every <b>5</b> years
<b>FIT-DNA test</b>	Also referred to as the stool DNA test – a lab test that checks for DNA changes and blood in a stool sample.	Every <b>1 to 3</b> years

If you have any questions about preventive screenings, call the Horizon *Healthy Journey* line at **1-844-754-2451** (TTY **711**), Monday through Friday from 8:30 a.m. to 5 p.m., ET.



## First aid for seizures

Seizures can happen quickly, and it is important to know how to care for someone who is having a seizure. First aid for seizures involves keeping a person safe until the seizure stops by itself.

### If someone is having a seizure, you should:

- Call **911**, and check for a medical bracelet.
- Ease the person onto the floor.
- Gently turn the person onto his or her side.
- Clear the area of anything hard or sharp.
- Place something soft under the person's head.
- Loosen tight clothing around the neck.
- Time the seizure.
- Stay with the person until the seizure ends.
- Stay calm.

### You should never:

- Put anything in the person's mouth.
- Hold the person down or try to stop their movements.

If you have seizures or care for someone who does, ask your doctor for more information about what to do during and after a seizure.

**We're here to support children's health care needs with immunizations**

Immunizations, also called vaccines protect your child against certain diseases. Many vaccines protect your child for life, while some will be given as one shot (dose) or a series of shots (two or more doses). For your child to be completely immune to (or protected against) a disease, he or she must get all the recommended doses.

If you have questions about vaccines or the recommended vaccines schedule for your child, please talk to your child's PCP.

**Immunizations are a covered benefit under Horizon NJ Health — there is no copayment.**



# Formulary Changes

We want to let you know about the recent changes to our formulary list, also called preferred drug list (see box). The changes found in this list will be added to our Drug Formulary list on our website at [horizonNJhealth.com](http://horizonNJhealth.com). You can also find the approved drug list online. This list includes an explanation and listing of step therapy, quantity/age limitations and drugs that require prior authorization (approval).

Here is a list of recent changes:

Covered Change Description	Brand (Generic) Drug Name	Alternatives (if applicable)
Covered	Cimduo (lamivudine, tenofovir disoproxil fumarate)	
Covered	Symfi Lo (efavirenz, lamivudine, tenofovir disoproxil fumarate)	
Covered	Symfi (efavirenz, lamivudine, tenofovir disoproxil fumarate)	
Covered	Renflexis (infliximab-abda)	
Covered	Crysvita (burosumab-twza)	
Covered	Jynarque (tolvaptan)	
Covered	Steglatro (ertugliflozin)	
Covered	Segluromet (ertugliflozin and metformin)	
Covered	Generic Albuterol HFA	
Covered	Lumigan (bimatoprost) 0.03%	
Covered	Aristada Initio (aripiprazole)	
Covered	Aristada (aripiprazole)	
Covered	Fulphila (pegfilgrastim-jmdb)	
Covered	Retacrit (epoetin alfa-epbx)	
Covered	Mulpleta (lusutrombopag)	
Covered	Tibsovo (ivosidenib)	
Covered	Humira (adalimumab) 10 mg/0.1 ml, 20 mg/0.2 ml, 40 mg/0.4 ml, 80 mg/0.8 ml,	
Not Covered	Remicade (infliximab)	Renflexis
Not Covered	Condylox (podofilox) gel	Generic Condylox Solution
Not Covered	Kristalose (lactulose) pack	Lactulose Solution
Not Covered	Jardiance (empagliflozin)	Steglatro
Not Covered	Synjardy (empagliflozin and metformin)	Segluromet
Not Covered	Ventolin HFA (albuterol)	Authorized Generic Ventolin HFA, ProAir HFA
Not Covered	Zytiga 500 mg (abiraterone)	Generic Zytiga 250 mg
Not Covered	Xtandi (enzalutamide)	Generic Zytiga 250 mg
Not Covered	Erleada (apalutamide)	Xtandi
Not Covered	Innopran XL (propranolol)	Generic Inderal LA (propranolol)
Not Covered	Inderal XL (propranolol)	Generic Inderal LA (propranolol)
Not Covered	Zelboraf	Tafinlar/Mekinist
Not Covered	Cotellic	Tafinlar/Mekinist
Not Covered	Neulasta (pegfilgrastim)	Fulphila
Not Covered	Procrit (epoetin)	Retacrit

Please talk with your PCP about these changes. If your PCP decides that, for medical reasons, you must take a drug that is not on the formulary list or needs pre-approval, including a brand name medication exception, he or she can call us and ask for special permission (prior authorization) for you to get the drug. Please note that Horizon NJ Health's maximum days' supply limit is 30 days.

Your PCP may call the Horizon NJ Health Pharmacy Department at **1-800-682-9090** (TTY **711**) to request a prior authorization.

# Make fall prevention a priority



Each year, millions of older adults fall. Falls are the most common cause of injury in older adults. You may be more likely to fall if you:

- Have arthritis (joint swelling)
- Have low levels of vitamin D
- Are overweight
- Drink alcohol
- Have dementia
- Have impaired vision or hearing
- Take drugs that make you drowsy

Don't lose your independence! Falls can be avoided. Many people don't think it will happen to them.

## 6 must-haves to prevent falls

- 1. A regular exercise routine.** Keep moving with activities that improve your strength and balance. Try walking or Tai Chi.
- 2. Grab bars and handrails.** These should be installed in tubs and on stairs to help you get in and out (and up and down) with ease.
- 3. Good lighting.** If you can't see well, falls are more likely to occur by tripping in low-lit areas of your house.
- 4. Medication check with your doctor.** Make sure your doctor knows about all of the medications you are taking, including over-the-counter. Tell your doctor right away if your medication makes you dizzy.
- 5. Updated glasses.** Have your vision checked once a year and make sure you get a new pair if your vision changes.
- 6. Clutter free home.** Get rid of things that you could trip over like loose rugs or wires.

### Bonus tip:

Ask your doctor about vitamin D supplements for improved bone, muscle and nerve health.

## 3 MILLION

Older people are treated in the ER for fall injuries.



### ONE OUT OF FIVE

falls causes a serious injury such as broken bones or a head injury.



### ONE OUT OF FOUR

older adults fall each year, but less than half tell their doctor.

# Notice of nondiscrimination

Horizon NJ Health complies with applicable Federal civil rights laws and does not discriminate against nor does it exclude people or treat them differently on the basis of race, color, gender, national origin, age, disability, pregnancy, gender identity, sex, sexual orientation or health status in the administration of the plan, including enrollment and benefit determinations.

Horizon NJ Health provides free aids and services to people with disabilities to communicate effectively with us, such as qualified sign language interpreters and information written in other languages.

## Contacting Member Services

Please call Member Services at **1-800-682-9090 (TTY 711)** or the phone number on the back of your member ID card, if you need the free aids and services noted above and for all other Member Services issues, including:

- Claim, benefits or enrollment inquiries
- Lost/stolen ID cards
- Address changes
- Any other inquiry related to your benefits or health plan

## Filing a Section 1557 Grievance

If you believe that Horizon NJ Health has failed to provide the free communication aids and services or discriminated on the basis of race, color, gender, national origin, age, or disability, you can file a discrimination complaint also known as a Section 1557 Grievance. Horizon NJ Health's Civil Rights Coordinator can be reached by calling the Member Services number on the back of your member ID card or by writing to the following address:

Horizon NJ Health – Civil Rights Coordinator  
PO Box 10194  
Newark, NJ 07101

You can also file a civil rights complaint with the U.S. Department of Health and Human Services, Office for Civil Rights, electronically through the Office for Civil Rights Complaint Portal, available at <https://ocrportal.hhs.gov/ocr/portal/lobby.jsf>, or by mail or phone at:

Office for Civil Rights Headquarters  
U.S. Department of Health and Human Services  
200 Independence Avenue, SW  
Room 509F, HHH Building  
Washington, D.C. 20201  
**1-800-368-1019** or **1-800-537-7697 (TTY)**

OCR Complaint forms are available at [www.hhs.gov/ocr/office/file/index.html](http://www.hhs.gov/ocr/office/file/index.html).  
Para ayuda en español, llame a **1-800-682-9090 (TTY 711)**.

# Help in your language

**ATTENTION: If you speak a language other than English, language assistance services, free of charge, are available to you. Call 1-800-682-9090 (TTY 711). This document is also available in other languages, as well as other formats, such as large print and Braille.**

ATENCION: Si habla español, tiene a su disposición servicios gratuitos de asistencia lingüística. Llame al **1-800-682-9090 (TTY 711)**.

注意：如果您使用繁體中文，您可以免費獲得語言援助服務。請致電 **1-800-682-9090 (TTY 711)**。

주의: 한국어를 사용하시는 경우, 언어 지원 서비스를 무료로 이용하실 수 있습니다.

**1-800-682-9090 (TTY 711)** 번으로 전화해 주십시오.

ATENÇÃO: Se fala português, encontram-se disponíveis serviços linguísticos, grátis.

Ligue para **1-800-682-9090 (TTY 711)**.

સુચના: જો તમે ગુજરાતી બોલતા હો, તો નિ:શુલ્ક ભાષા સહાય સેવાઓ તમારા માટે ઉપલબ્ધ છે. ફોન કરો

**1-800-682-9090 (TTY 711)**.

UWAGA: Jeżeli mówisz po polsku, możesz skorzystać z bezpłatnej pomocy językowej. Zadzwoń pod numer **1-800-682-9090 (TTY 711)**.

ATTENZIONE: In caso la lingua parlata sia l'italiano, sono disponibili servizi di assistenza linguistica gratuiti. Chiamare il numero **1-800-682-9090 (TTY 711)**.

ملا حوزة اللغوية تترفاو لباكلمن انا. تنك اذ اقم ترتصل بارقم هاتفنا ركذا حدث للمان خنف ، لغات المعداس **1-800-682-9090**  
(كبلاو صملا 711)

PAUNAWA: Kung nagsasalita ka ng Tagalog, maaari kang gumamit ng mga serbisyo ng tulong sa wika nang walang bayad. Tumawag sa **1-800-682-9090 (TTY 711)**.

ВНИМАНИЕ: Если вы говорите на русском языке, то вам доступны бесплатные услуги перевода. Звоните **1-800-682-9090 (телетайп 711)**.

ATANSYON: Si w pale Kreyòl Ayisyen, gen sèvis èd pou lang ki disponib gratis pou ou. Rele **1-800-682-9090 (TTY 711)**.

ध्यान दें: यदि आप हिंदी बोलते हैं तो आपके लिए मुफ्त में भाषा सहायता सेवाएं उपलब्ध हैं।

**1-800-682-9090 (TTY 711)** पर कॉल करें।

CHÚ Ý: Nếu bạn nói Tiếng Việt, có các dịch vụ hỗ trợ ngôn ngữ miễn phí dành cho bạn. Gọi số **1-800-682-9090 (TTY 711)**.

ATTENTION : Si vous parlez français, des services d'aide linguistique vous sont proposés gratuitement. Appelez le **1-800-682-9090 (ATS 711)**.

خبردار: اگر آپ اردو بولتے ہیں، تو آپ کو زبان کی مدد کی خدمات مفت میں دستیاب ہیں۔ کال کریں

**1-800-682-9090 (TTY 711)**.

# Blue Notes

Member Services **1-800-682-9090** (TTY **711**) 24 hours a day, seven days a week. [horizonNJhealth.com](http://horizonNJhealth.com)

BLUE NOTES is published for members of Horizon NJ Health, 1700 American Blvd., Pennington, NJ 08534. Information in BLUE NOTES comes from a wide range of medical experts. If you have any concerns or questions about specific content that may affect your health, please contact your health care physician. Models may be used in photos and illustrations.

Apple and the Apple logo are trademarks of Apple Inc., registered in the U.S. and other countries.

App Store is a service mark of Apple Inc., registered in the U.S. and other countries.

Google Play and the Google Play logo are trademarks of Google LLC.


Horizon NJ TotalCare (HMO SNP) is an HMO Medicare Advantage Dual Eligible Special Needs plan with a Medicare contract and a contract with the State of New Jersey Medicaid Program. Enrollment in Horizon NJ TotalCare (HMO SNP) depends on contract renewal. Products are provided by Horizon NJ Health. Communications are issued by Horizon Blue Cross Blue Shield of New Jersey in its capacity as administrator of programs and provider relations for all its companies. Both are independent licensees of the Blue Cross and Blue Shield Association.


The Blue Cross® and Blue Shield® names and symbols are registered marks of the Blue Cross and Blue Shield Association.

The Horizon® name and symbols are registered marks of Horizon Blue Cross Blue Shield of New Jersey.

© 2019 Horizon Blue Cross Blue Shield of New Jersey. Three Penn Plaza East, Newark, New Jersey 07105.

Y0090\_H8298\_EC002899\_M 086-19-25

 Horizon Blue Cross Blue Shield of New Jersey has joined active users on Facebook® with our own corporate page, [facebook.com/HorizonNJH](https://www.facebook.com/HorizonNJH)

 You can stay up-to-date with the latest company news and health and wellness information. Follow us on Twitter,™ [twitter.com/HorizonNJHealth](https://twitter.com/HorizonNJHealth).